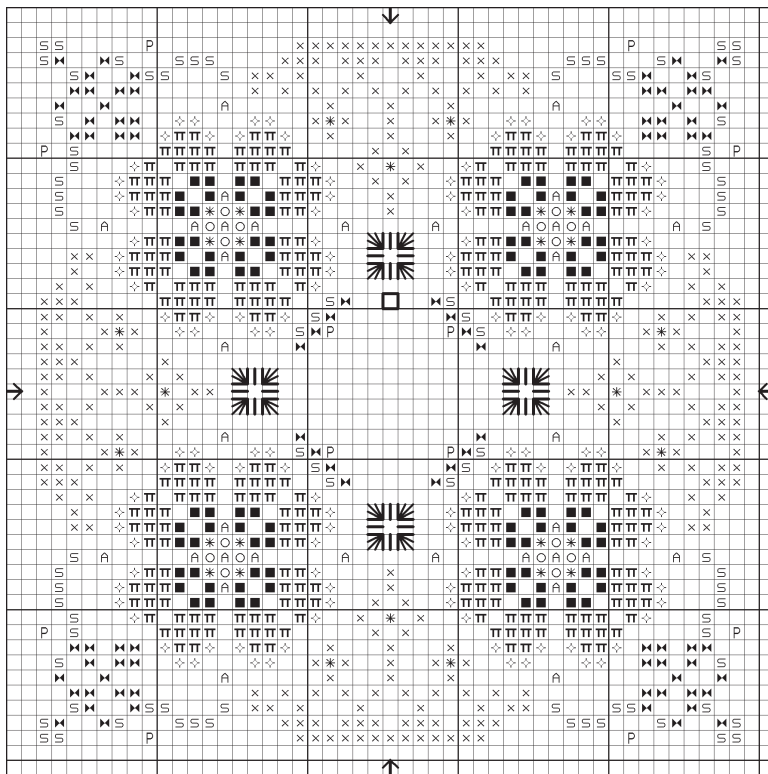


# Royal Blossoms 2007



Each square on the graph equals 2 threads of fabric

©2007 Just Nan, Inc. by Nan Caldera  
All Rights Reserved

**Instructions:** Work all cross stitches over 2 threads of linen using 2 strands of floss or 1 strand of perle cotton.

**Smyrna Cross:** Represented by symbols on the graph and in the table. Use 2 strands of floss.

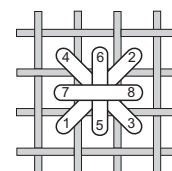
**Double Cross Eyelet:** Use 2 strands of 712, pulling each leg gently to create the double cross pattern.

**Embellishments:** Attach all beads with a beading needle and 1 strand of 613. Center the Queen Bee, using the outlined square as a guide for the loop. Attach with 2 strands of 613, covering the loop with tiny stitches.

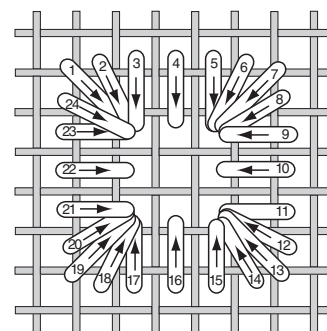


JNC45 • Queen Bee Charm

SYMBOL	DMC
■	208
P	208 Smyrna
π	209
◇	211
⌘	520
S	522
None	613
None	712
*	3688 Smyrna
x	#8 Perle 712
O	Mill Hill 40123 Cream Bead
A	Mill Hill 40557 Gold Bead
None	JNC45 Queen Bee Charm
<b>FABRIC: 28 CT ZWIGART RAW/OPALESCENT CASHEL LINEN</b>	
<b>DESIGN AREA: 47H X 47W • 3 3/8" X 3 3/8" on 28 Count</b>	



Smyrna Cross



Double Cross Eyelet

*Royal Blossoms 2007 is a reprint of a 1995 complimentary pattern, updated with new colors, fabric and embellishments.*

CP4R



Copyrighted complimentary pattern.  
May be reprinted as paper copy, but not sold or digitized for use on any CD-DVD media, internet or computer network other than justnan.com.

Just Nan, Inc. • Cumming, GA • <http://www.justnan.com>