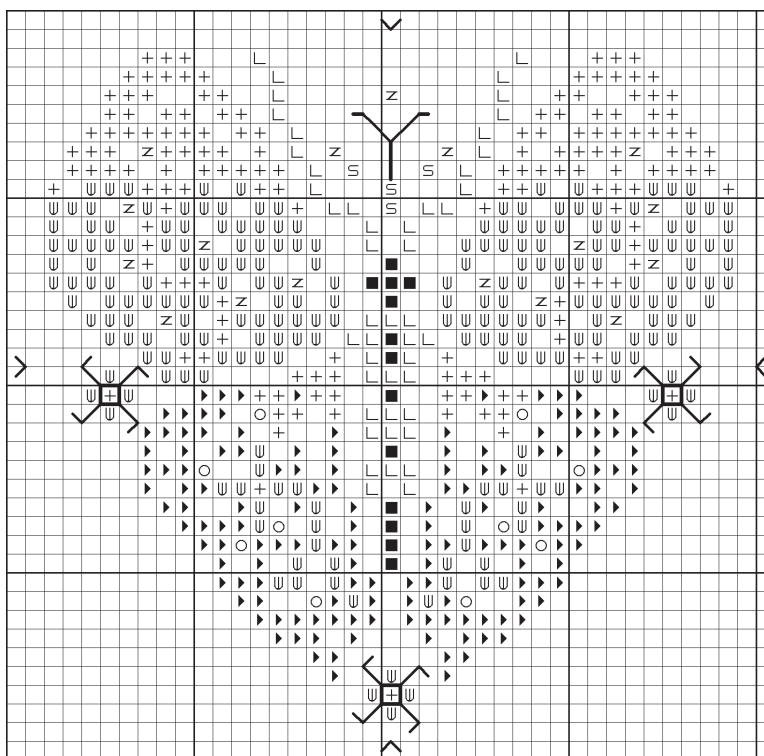


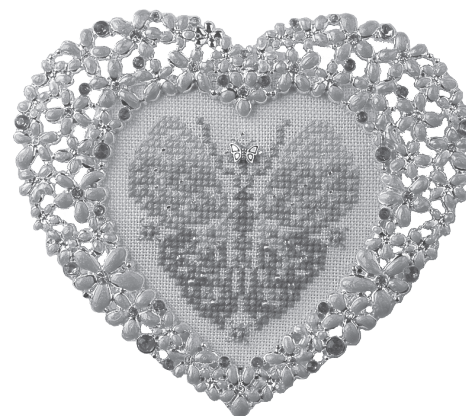
Heart Butterfly 2008



Each square on the graph
equals 2 threads of fabric

©2008 Just Nan, Inc. by Nan Caldera
All Rights Reserved

SYMBOL	DMC
S	522
■	611
L	612
►	3687
Ψ	3688
+	3689
None	3865
SYMBOL	JUST NAN EMBELLISHMENTS • CP25E
z	Silver Crystal Bead
○	Violet Rainbow Bead
None	Silver Butterfly Bead
FABRIC: 32 CT ZWEIGART ANT. WHITE BELFAST LINEN	
DESIGN AREA: 36H X 37W • 2 3/8" X 2 3/8" on 32 Count	



HBF • Heart Butterfly Frame

Instructions: Work all cross stitches over 2 threads of linen using 2 strands of floss. Since the butterfly wings are worked in only 3 shades of floss, you could easily change colors and transform the butterfly to violet, blue, yellow or whatever your heart desires!

Backstitching (1 strand): Centers of flowers and butterfly antennae with 3687; leaf lines around flowers with 522.

Embellishments: Attach all beads, including the butterfly, with a beading needle and 1 strand of 3865 or color that matches your linen. Go through each bead twice to secure. The vertical line above the green stitches at the top of the design is the placement line for the butterfly. The remaining lines are the antennae.

Frame: The beautiful heart frame with sparkling crystals is available from Just Nan. Supply is limited. Iron fusible interfacing to the back of the design. Use the glass from the frame as a tracing and cutting template. Insert the design in the frame; add the glass in **back** of the linen, then the backing plate.