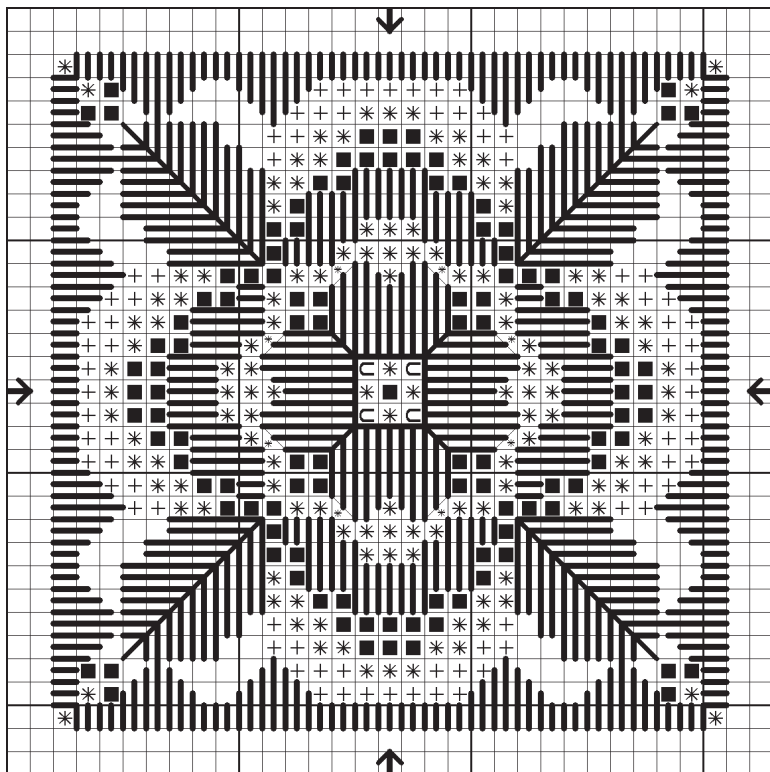


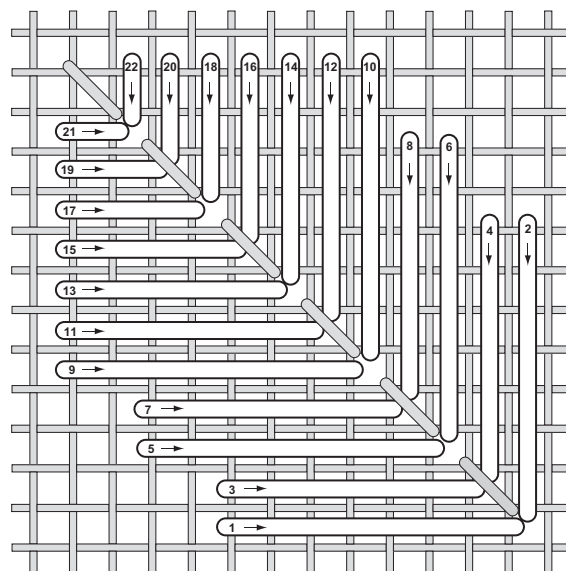
# WhimZi Rose



Each square on the graph equals 2 threads of fabric

©2005 Just Nan, Inc. by Nan Caldera  
All Rights Reserved

SYMBOL	Au Ver A Soie® SOIE D'ALGER	DMC FLOSS
None	1845	501
+	4631	3689
*	4634	3687
SYMBOL	Au Ver A Soie® SOIE PERLEE	DMC FLOSS
■	SPS 648	3685
SYMBOL	TREBIZOND	DMC FLOSS
C	TRA 125	White
None	TRA 425	3689
<b>FABRIC: 28 CT ZWEIFGART RAW CASHEL LINEN</b>		
<b>DESIGN AREA: 29H X 29W • 2" X 2" on 28 Count</b>		



**Fabric Choice:** Center the design on a 6" square of 28 or 32 count linen. Both counts will fit the WhimZi frame.

**Stitching:** Work all cross stitches over 2 threads of linen using 2 strands of silk or floss. Backstitch with 1 strand. Work all cross stitches first; then add the leaves, the Satin stitches in the rose, backstitches and the Satin stitch border.

**Leaf Stitch:** Use 2 strands of 1845 (2 of 501). Work the numbered lines, then add backstitches down the center.

**Satin Stitches:** Trebizond is a 3-ply silk. Separate and work with 1 ply of TRA 425 for the lines in the rose. Use 1 ply of TRA 125 for the lines in the border. The silk will be crinkled and give your stitches a wavy look. If you are using DMC, work with 2 strands of 3689 for the rose, and 2 strands of White for the border.

**Backstitching:** Use 1 strand of 4634 (3687) for the diagonal lines and square outline in the center of the rose.

**WhimZi Framing:** Follow the instructions packaged with each WhimZi frame. Mounting your needlework is quick and easy, and you will love the results!



WhimZi Frames available from  
Just Nan, Inc.

Copyrighted complimentary pattern.  
May be reprinted but not sold or digitized for use on  
any internet/computer network other than justnan.com.  
Color Image at <http://www.justnan.com/cp2005.html>