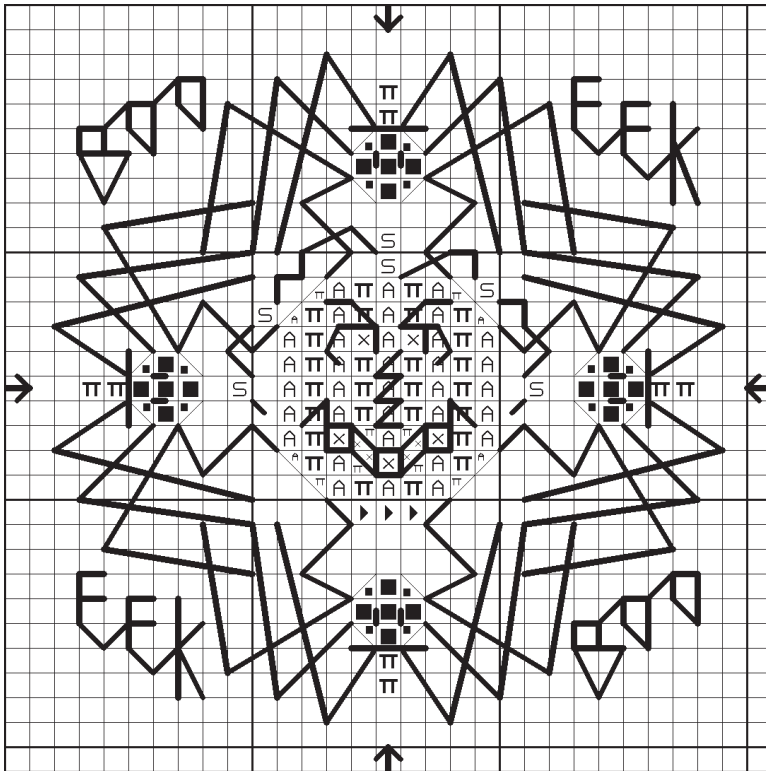


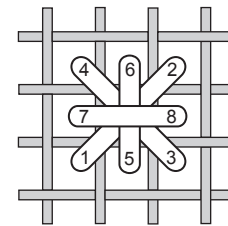
Poor Jack!



Each square on the graph equals 2 threads of fabric

©2005 Just Nan, Inc. by Nan Caldera
All Rights Reserved

SYMBOL	DMC
X	White
■	310
▶	550
S	581 Smyrna
Π	606/946
∧	971
None	972
FABRIC: 28 CT ZWEIGART COUNTRY MOCHA CASHEL LINEN	
DESIGN AREA: 27 H X 27 W • 2" X 2" on 28 Count	



Smyrna Cross

Fabric: Stitch the design on either 28 or 32 count linen; both will fit the WhimZi frame.

Instructions: Work all cross stitches over 2 threads of linen using 2 strands of floss. For the symbol with 2 colors, use 1 of each in the needle.

Order of stitching: Jack (without stem and leaves); top spider; bottom spider; side spiders; Jack's leaves and vines; words. Follow this progression and everything will overlap properly.

Backstitching (1 strand): 972 for the spider eyes; 310 for Jack's eyes, nose and mouth and the spider legs; 581 for the vines connecting the "S" symbols; 550 for the words.

Backstitching (2 strands): 1 each of 606 & 946 for the spider hat brims. Work these as you do the cross stitches in the hats.

Smyrna Cross: Indicated by symbols on the graph. Use 2 strands of 581.

WhimZi Frame: Created for the black spider WhimZi frame (WFBS01). Instructions for mounting are packaged with each frame – it's easy; it's fast; it's the perfect finishing touch!



WhimZi Frames available from
Just Nan, Inc.